

NITECORE®



HA11

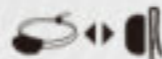
ULTRA LIGHTWEIGHT
DUAL BEAM AA HEADLAMP



240 Lumens



90 Meters



Multipurpose Clip



36g / 1.27 oz



IP66

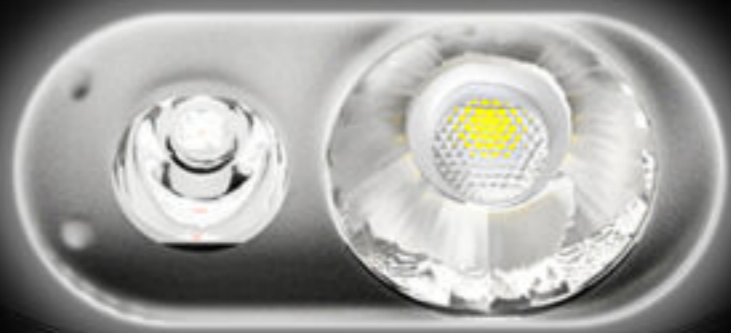


40 Hours
on the ULTRALOW Level

These images are for guide purpose only, actual result may vary depending on ambient factors.
They are the intellectual property of Nitecore. All rights to take legal action are reserved.

240 Lumens Max Output

Utilizing a unibody optical lens system with various facets, it can provide a max output of 240 lumens and a max throw of 90 meters, achieving an excellent performance in a compact size.



Unibody Optical Lens System





Dimensions: 61.5mm x 36.2mm x 28.9mm
(2.42" x 1.43" x 1.14")

36 g/1.27 oz

Unimaginable Light Weight

Half the weight of an egg (Bracket and Headband Included)

It is made from special PC plastic with impact and low temperature resistance, enabling you to wear it for a long time without a sense of weight.



Red Light

Able to be accessed instantly, ideal for map viewing, emergency response, stargazing, wildlife observation, night photography, and more



6 Lumens ULTRALOW Level

Applicable to use in darkness without harsh light

Ultra Lightweight Headband Included

Due to the braided design with reflective and glow-in-the-dark features, it is applicable to alert pedestrians and vehicles, guarding your safety at night.



Reflective



Glow-in-the-dark

1 x AA Battery Powered

The AA battery is economical and easily accessible, able for quick replacement to supplement power.



 **10** Hours
Max Runtime
LOW (60 Lumens)

 **40** Hours
Max Runtime
ULTRALOW (6 Lumens)

1 x Alkaline AA Battery Included

Intelligent Voltage Regulation

Designed with the wide voltage range, it is compatible with various AA batteries such as alkaline, Ni-MH, and lithium batteries.

Primary Alkaline
AA Battery

Rechargeable
Ni-MH AA Battery

Primary Lithium
AA Battery



Multipurpose Clip Included



90° Adjustable Bracket

With the curved and 360° rotatable design, the multipurpose clip can be firmly attached to the backpack webbing, and it is ideal for various activities when used with the 90° adjustable bracket.

Backpack



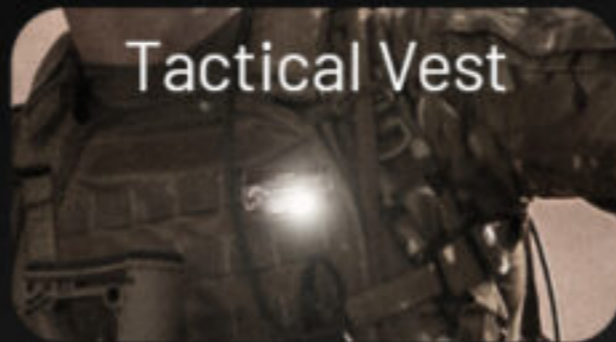
Cap Brim



Strap



Tactical Vest



Sling Bag



Various Activities



Night Running



Camping



Trekking



Road Trip



Emergency Lighting

Dual Buttons Interface

MODE Button 
Light Sources Switching

Power Button 
On / Off
Brightness Levels Adjustment



Ultra-low Standby Power Consumption

365-day ready experience in the standby status



Lockout Mode

In Lockout Mode, either button is unavailable to turn on the light, effectively preventing accidental activation during carrying or storing.



Highly Efficient Constant Current Circuit (Non-PWN)

The constant brightness beam without flashing guarantees the comfortable visual experience.



Non-PWN



PWN





IP66 Rated



1m Impact Resistant

Technical Data



FL1 STANDARD	White Light					Red Light	
	HIGH	LOW	ULTRALOW	SOS	BEACON	CONSTANT-ON	SLOW FLASHING
	240 Lumens	60 Lumens	6 Lumens	240 Lumens	240 Lumens	5 Lumens	5 Lumens
	4h	10h	40h	-	-	10h	-
	90m	45m	10m	-	-	10m	-
	1,600cd	460cd	30cd	-	-	15cd	-
	1m (Impact Resistance)						
	IP66						

Note: The stated data is measured by using 1 x 1.5V alkaline AA battery in accordance with the international flashlight testing standards ANSI/NEMA FL1. The data may vary in real world use due to different battery usage or environmental conditions.



Features

- Ultra lightweight dual beam AA headlamp
- Max output of 240 lumens
- Red light illumination designed for preserving night vision
- Utilizes a unibody optical lens system with various facets
- Available with a wide voltage range and compatible with various AA batteries such as alkaline, Ni-MH, and lithium batteries
- Designed with two buttons different in shape and touch, offering easy one-handed operation
- 3 brightness levels, 2 light sources, and 3 special modes available
- Made from special PC plastic with impact and low temperature resistance
- Compact and lightweight
- Impact resistant to 1 meter
- Waterproof and dustproof rating in accordance with IP66