

NITECORE®



EMR30



Electronic Multipurpose Repeller

These images are for guide purpose only, actual result may vary depending on ambient factors.
They are the intellectual property of Nitecore. All rights to take legal action are reserved.

6

Outstanding Advantages



20ft
Protection Zone



12 Hours
Max Runtime



360°
Ultrasonic Function



10,400mAh
Power Supply



18W
Input & Output



Magnetic Storage
Top Cover



Stylish Space Silver

A perfect combination of technology and art, attracting attention wherever it is placed.



Various Activities



20ft



Larger Protection Zone

Built-in active diffusion system can effectively increase the mosquito protection area while the max protection zone of 20ft is 200% larger than that of the conventional mosquito repeller.



Excellent Mosquito Repelling Function

Heat Activation + Mosquito Repelling Mat
The EMR30 can repel mosquitos in 10 minutes.



🕒 10 Minutes

Dual Mosquito Repellent Mats

Double Mosquito Repelling Effect

Double Size
Double Usage

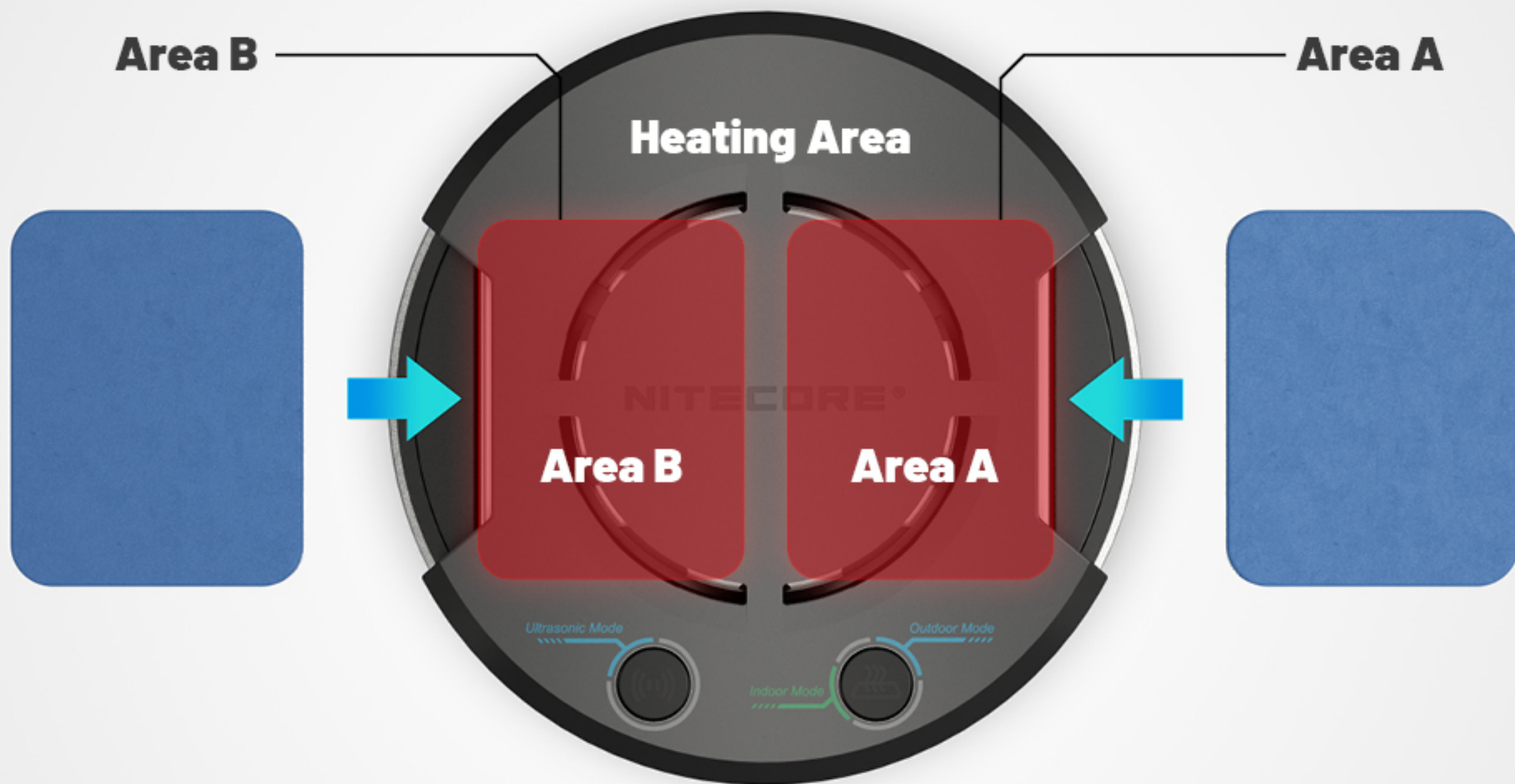
Outdoor Mosquito Repellent Mat

🕒 60 Hours Mosquito Protection
(10 x Mosquito Repellent Mats Included)

Conventional
Mosquito Repellent Mat

**12 Hours
Max Runtime**





2 mosquito repellent mats can be placed on the heating area at the same time and the heating area will heat successively from Area A to Area B in Indoor Mode.

Dual Mosquito Repelling Modes

Short press the Mosquito Repelling Button to switch between 2 modes.



20ft
Protection Zone **Outdoor Mode**

Dual repellent mats are heated simultaneously.
⌚ 5 Hours Mosquito Protection



11ft
Protection Zone **Indoor Mode**

Dual repellent mats are heated sequentially.
⌚ 12 Hours Mosquito Protection

40kHz



360° Ultrasonic Function

4 ultrasonic speakers with 40kHz ultrasound frequency provide an all-round pest repelling effect.

The mosquito repelling function and ultrasonic function can be activated at the same time to repel pests, such as insects, mice, snakes, cockroaches, skunks, and more.





Safe and Reliable





18W

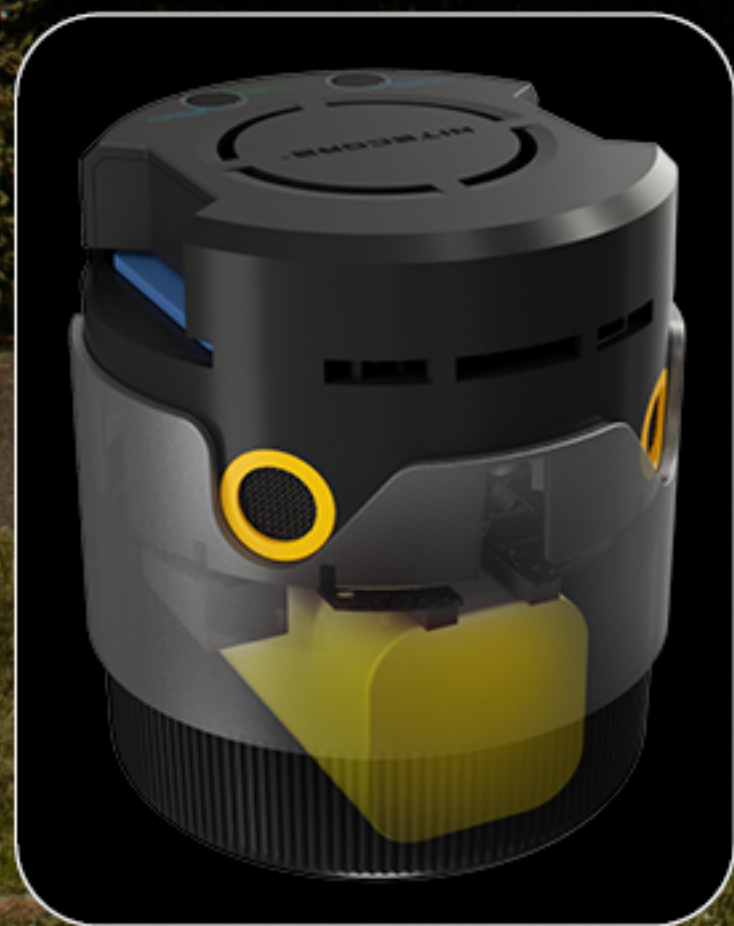
Input & Output

Available with QC3.0 / PD3.0 charging modes, it only takes 2h 30min to fully charge the EMR30 while it is able to be used as a power supply to charge smartphones.



Built-in 10,400mAh Large Capacity Li-ion Battery

Powered by the built-in Li-ion battery, the EMR30 provides a max runtime of 12 hours outdoors while it can be used when connecting to a power supply indoors.



🕒 12 Hours





Magnetic Top Cover

It can be attached to the top or bottom of the EMR30 to prevent loss.

TOP



BOTTOM



Mode Indication

Blue Light: Ultrasonic Mode

(Note: This is Ultrasonic Button.)

Green Light: Indoor Mode

Blue Light: Outdoor Mode

(Note: This is Mosquito Repelling Button.)



Power Indication

- ● ● ● 1 Constant on: Approx. 25%
- ● ● ● 2 Constant on: Approx. 50%
- ● ● ● 3 Constant-on: Approx. 75%
- ● ● ● 4 Constant-on: Approx. 100%

1 Flashing: Below 10%

IPX5 Rated
Excellent Water Resistance



User-friendly Details



Top Cover Storage Design

Available for storing
the charging cable



USB-C to USB-C Charging Cable

Braided design can
effectively prevent
tangling.



EMR30 Electronic Multipurpose Repeller

Specifications

Input	5V=2.4A / 9V=2A (18W MAX)
Output	5V=2.4A / 9V=2A / 12V=1.5A (18W MAX)
Rated Capacity	6,400mAh 5V (TYP 1A)
Capacity	10,400mAh 37.44Wh MAX
Ultrasound Frequency	40kHz
Heating Temperature	125°C / 257°F MAX
Modes	Indoor Mode: 11ft Protection Zone Outdoor Mode: 20ft Protection Zone
Dimensions	121mm x Ø 93mm (4.8" x Ø 3.7") (Accessories Not Included)
Weight	576g±5g (20.3 oz±0.1 oz) (Accessories Not Included)
Accessories	USB-C Charging Cable, Mosquito Repellent Mat x 10
Waterproof Rating	IPX5